

ICC **INDOFINE Chemical Company, Inc.**

121 Stryker Lane, Bldg. 30, Suite 1 • Hillsborough, NJ 08844 • U.S.A.

Phone: (908) 359-6778 • FAX: (908) 359-1179

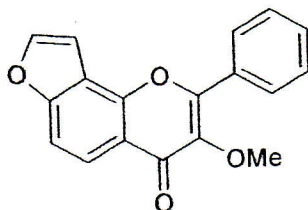
website: www.indofinechemical.com

e-mail: chemical@indofinechemical.com

CERTIFICATE OF ANALYSIS

Cat No.: K-001

<u>Product:</u>	KARANJIN
<u>CAS No.:</u>	[521-88-0]
<u>Lot Number:</u>	88010
<u>Chemical family:</u>	Flavonoids
<u>Molecular Formula:</u>	C ₁₈ H ₁₂ O ₄
<u>Molecular Weight:</u>	292.28
<u>Melting Point:</u>	155-157°C
<u>Appearance:</u>	White shining powder
<u>TLC:</u>	Hexane:Ethyl acetate (7:3)
<u>Solubility:</u>	Soluble in CDCl ₃
<u>Purity(HPLC):</u>	98.06%





INDOFINE Chemical Company, Inc.

121 Stryker Lane, Bldg. 30, Suite 1 • Hillsborough, NJ 08844 • U.S.A.

Phone: (908) 359-6778 • FAX: (908) 359-1179

website: www.indofinechemical.com

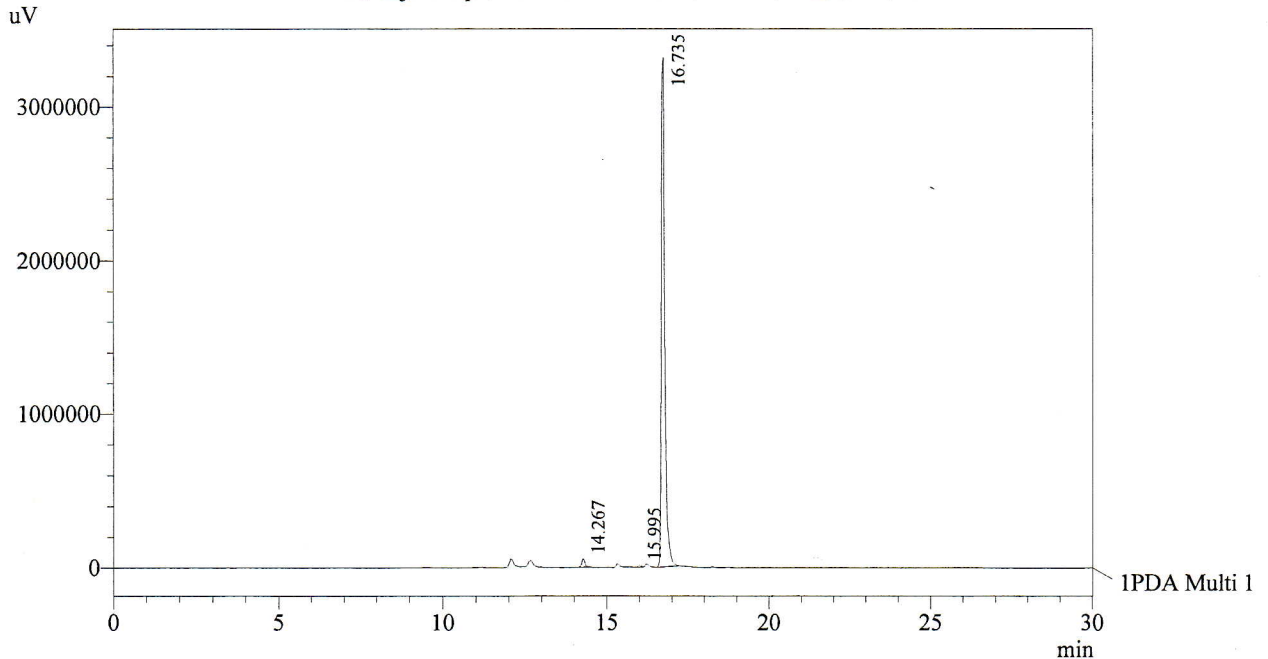
e-mail: chemical@indofinechemical.com

HPLC ANALYSIS

Acquired by	: Sanjeev	Catalog No.:	K-001
Sample Name	: Karanjin	Product name:	Karanjin
Sample ID	: Lot No:- 88010	Lot No.:	88010
Injection Volume	: 20 uL		
Data Filename	: 300312C.lcd		
Method Filename	: Linear Gradient.M.lcm		

Date Acquired	: 3/30/2012 12:11:04 PM
Data Processed	: 3/31/2012 10:32:51 AM
Column	: LUNA C-18(2), (250mm x4.6mm 5.0μ)
Flow	: 1.000 mL/min.
Mobile Phase	: A(0.05% TFA in water) B(Acetonitrile)
	0.01 90 10
	12.0 10 90
	20.0 10 90
	23.0 90 10
	30.0 90 10

Chromatogram
Karanjin D:\promonence\Data\2012\MAR-2012\300312C.lcd



1 PDA Multi 1 / 254nm 4nm

PeakTable

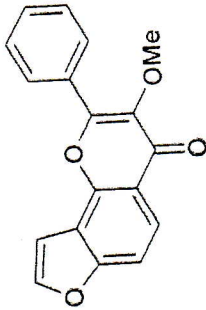
PDA Ch1 254nm 4nm

Peak#	Name	Ret. Time	Area	Area %	Relative Retention Time
1	RT:14.267	14.267	387081	1.58	0.85
2	RT:15.995	15.995	87645	0.36	0.96
3	RT:16.735	16.735	24058856	98.06	1.00
Total			24533581	100.00	



INDOFINE Chemical Company, Inc.
121 STRYKER LANE
BLDG. 30, SUITE 1
HILLSBOROUGH, NJ 08844

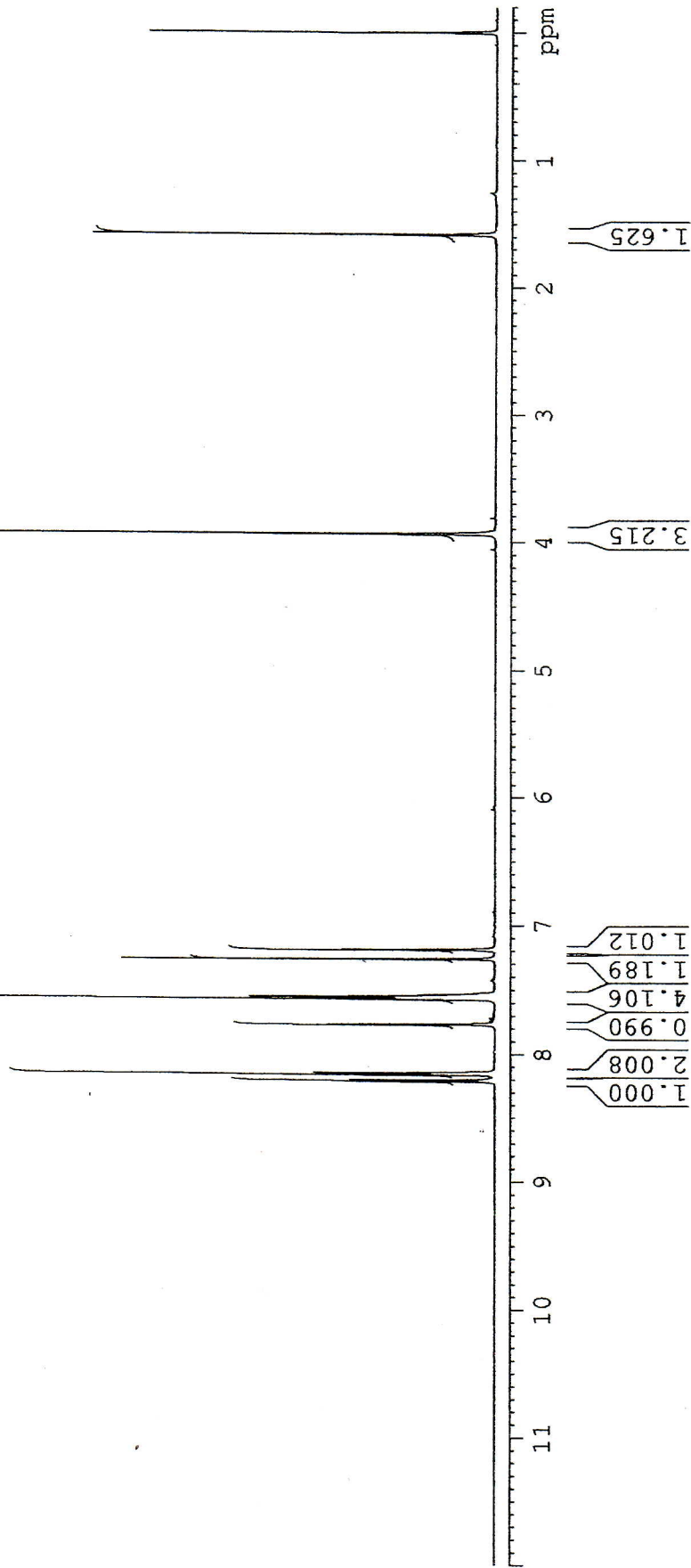
Catalog No.: K-001
Product name: Karanjin
Lot No.: 88010



SOLVENT CDC13
NS 16
DS 0
SWH 10638.298 Hz
FIDRES 0.368822 Hz
AQ 1.3557180 sec
RG 512
DW 47.000 usec
DE 6.00 usec
TE 298.3 K
D1 1.50000000 sec
TD0 1

===== CHANNEL f1 =====
NUC1 1H
P1 8.50 usec
PL1 -1.00 dB
SF01 600.3349137 MHz
F2 - Processing parameters
SI 32768
SF 600.3300142 MHz
WDW EM
SSB 0
LB 0.30 Hz
GB 0
PC 4.00

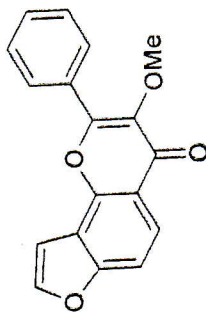
ICC-M-01
1H IN CDCL3
AVANCE-600





INDOFINE Chemical Company, Inc.
 121 STRYKER LANE
 BLDG. 30, SUITE 1
 HILLSBOROUGH, NJ 08844

Catalog No.: K-001
 Product name: Karanjin
 Lot No.: 88010

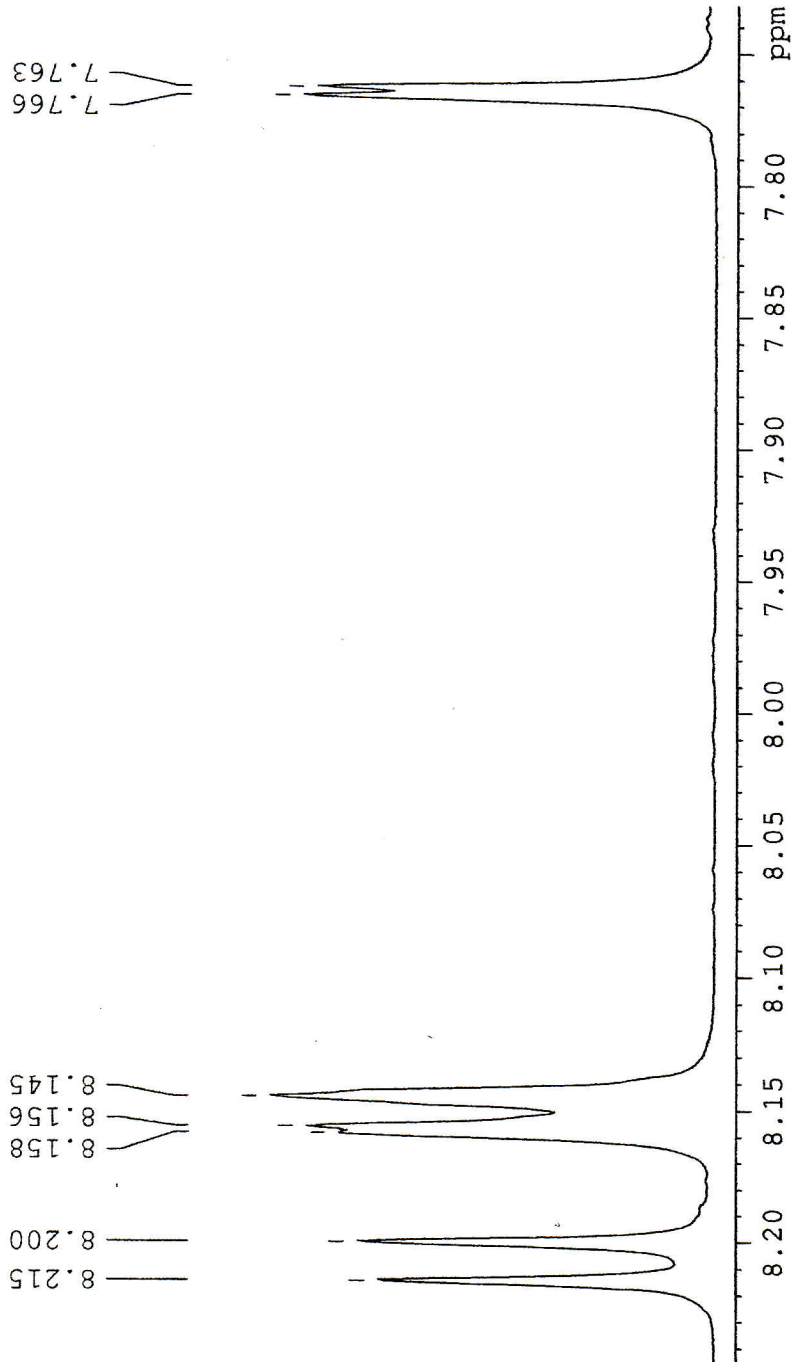


ICC-M-01
 1H IN CDCl3
 AVANCE-600

SOLVENT CDCl3
 NS 16
 DS 0
 SWH 10638.298 Hz
 FIDRES 0.368822 Hz
 AQ 1.3557180 sec
 RG 512
 DW 47.000 usec
 DE 6.00 usec
 TE 298.3 K
 D1 1.50000000 sec
 TD0 1

==== CHANNEL f1 =====
 NUC1 1H
 P1 8.50 usec
 PL1 -1.00 dB
 SFO1 600.3349137 MHz

F2 - Processing Parameters
 SI 32768
 SF 600.3300142 MHz
 WDW EM
 SSB 0
 LB 0.30 Hz
 GB 0
 PC 4.00



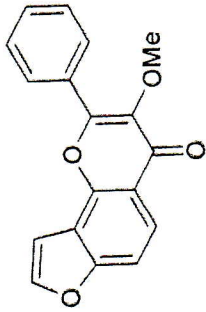


INDOFINE Chemical Company, Inc.
 121 STRYKER LANE
 BLDG. 30, SUITE 1
 HILLSBOROUGH, NJ 08844

Catalog No.: K-001
 Product name: Karanjin
 Lot No.: 88010

SOLVENT CDCL3
 NS 16
 DS 0
 SWH 10638.298 Hz
 FIDRES 0.368822 Hz
 AQ 1.3557180 sec
 RG 512
 DW 47.000 usec
 DE 6.00 usec
 TE 298.3 K
 D1 1.50000000 sec
 TD0 1

===== CHANNEL f1 =====
 NUC1 1H
 P1 8.50 usec
 PL1 -1.00 dB
 SFO1 600.3349137 MHz
 F2 - Processing parameters
 SI 32768
 SF 600.3300142 MHz
 WDW EM
 SSB 0
 LB 0.30 Hz
 GB 0
 PC 4.00



ICC-M-01
 1H IN CDCL3
 AVANCE-600

7.573
7.567
7.563
7.552
7.550
7.546
7.535

7.261
7.190
7.188

